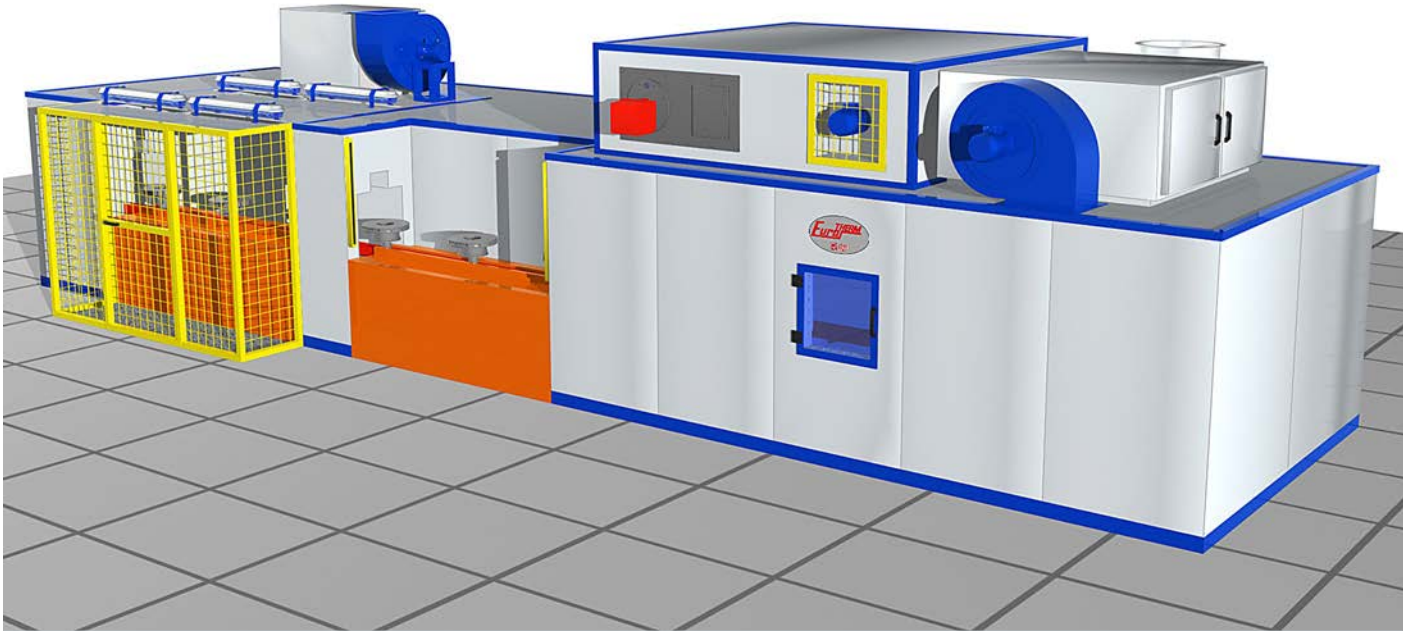


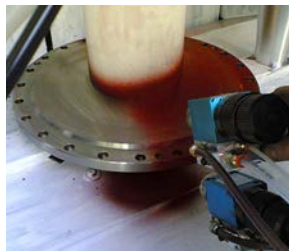
## PAINTING LINE FOR SMALL PARTS



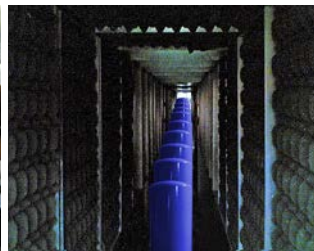
**Modular painting line, suitable for painting of big volumes of small parts  
Specially suitable for painting of round parts such as brake disks, wheel rims, bottles**



Unit line



Painting



Cooling tunnel



Load and unload station

### OPTIONALES ACCESSORIES

Additional painting phases  
Painting booth with water veil filtering wall

### NOTES

Compact line, suitable for painting of small parts, with inverted conveyor and chain drive  
Can be easily integrated into an existing assembly line

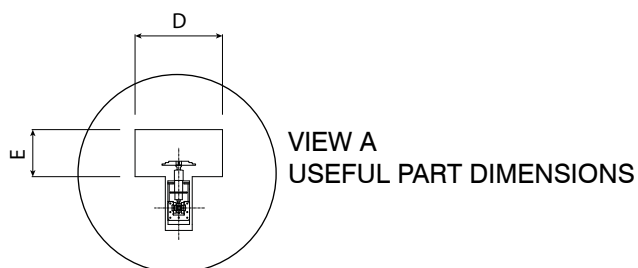
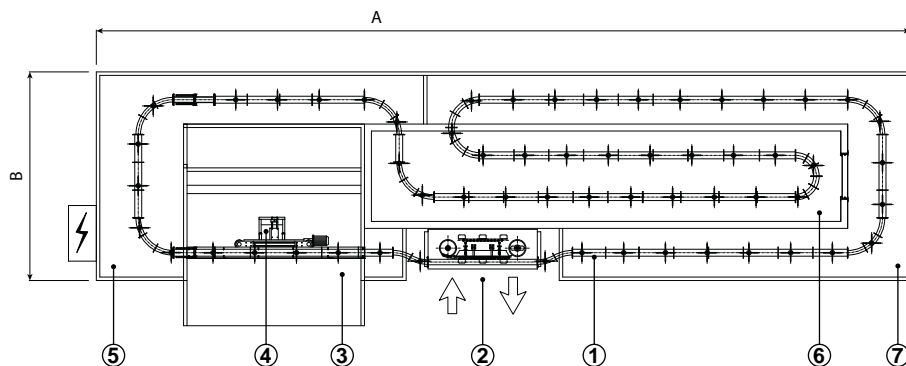
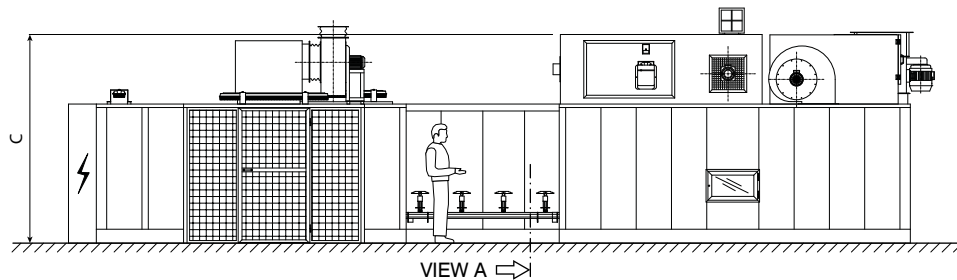
Standard painting line includes:

- Painting booth with dry filter wall
- Flash off tunnel
- Curing oven
- Cooling tunnel

Methane or LPG burners

Material: painted galvanized steel sheet

Le quote e le caratteristiche tecniche sono indicative e possono essere variate secondo le specifiche esigenze del cliente



- ① INVERTED CONVEYOR
- ② LOADING AND UNLOADING
- ③ PAINTING BOOTH
- ④ PART TURNER
- ⑤ DRYING OVEN
- ⑥ CURING OVEN
- ⑦ COOLING TUNNEL

### DESCRIPTION OF EQUIPMENT

Model	Outside dimensions			Useful dimensions	
	A	B	C	D	E
<b>Euro BLOCK</b>	12500	3000	3000	650	350

### TECHNICAL CHARACTERISTICS

Model	Speed inverted conveyor	Total electric power	Total heat power	Burners	Air and fumes extraction chimneys
	meters/min	kW	kCal/h	nb	nb
<b>Euro BLOCK</b>		0	0	1	2