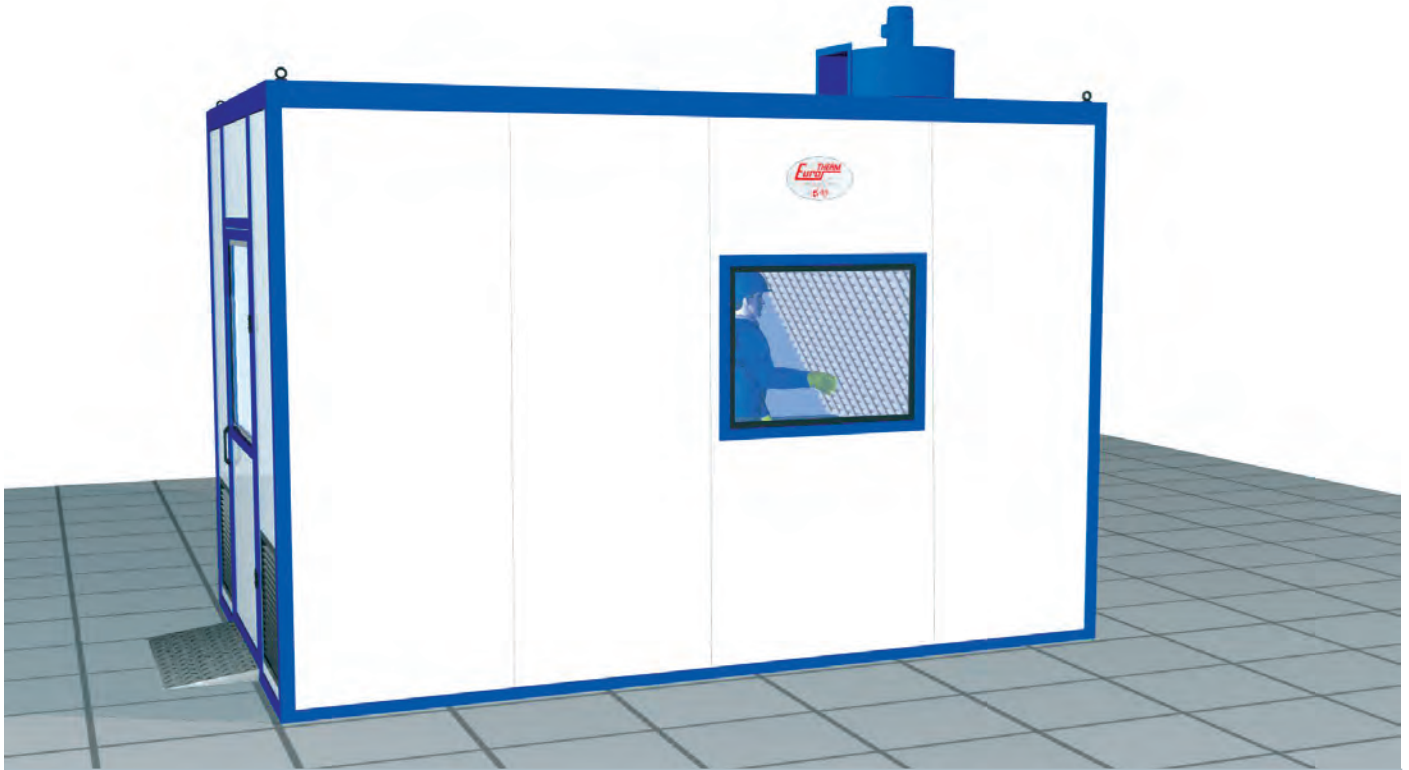


## PREPARATION PAINT MODULE



“ Range with floor grill and tank recovery”

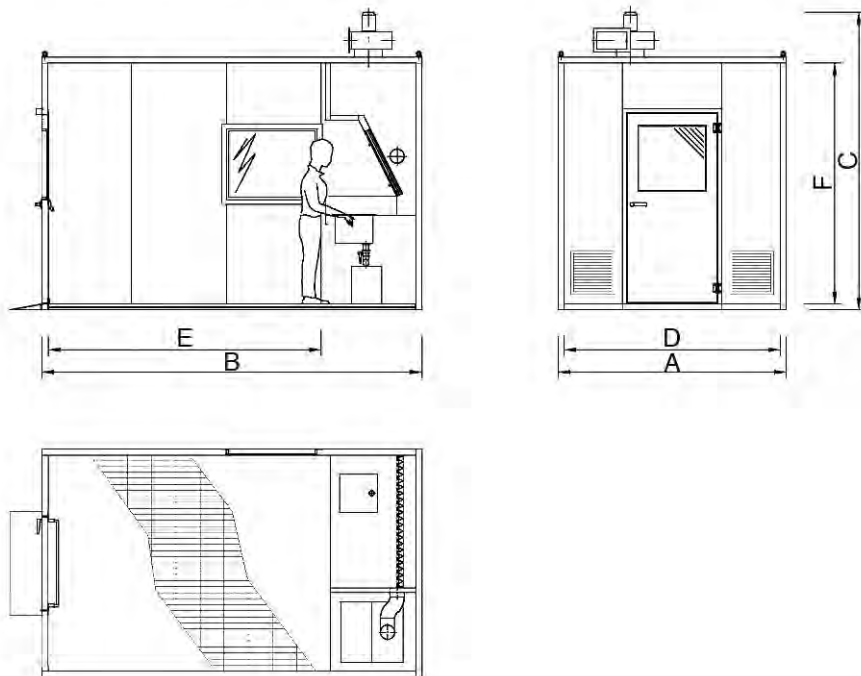


### OPTIONAL ACCESSORIES

- Fire-fighting equipment
- Forced ventilation
- Waterproof neon light, 1200 mm length IP 65, 2 neon 36 W
- Electric control board

### NOTES

- Technical characteristics and dimensions are given as indication and improvement
- Carried out in galvanized metal sheet, in pre-painted galvanized metal sheet
- Thickness of the insulating panels 50 mm
- Pedestrian door: 1000 x 2100 h
- Natural and forced ventilation
- Pre-assembled supply



### EQUIPMENT IDENTIFICATION

Model	Overall dimensions (mm)			Useful dimensions (mm)		
	A	B	C	D	E	F
<b>Euro LPV</b>	2.400	4.000	3.130	2.300	2.900	2.500

### TECHNICAL CHARACTERISTICS

Model	Reciprocated air m <sup>3</sup> /h	Fans n°	Electrical power kW
<b>Euro LPV</b>	2.000	1	0,75